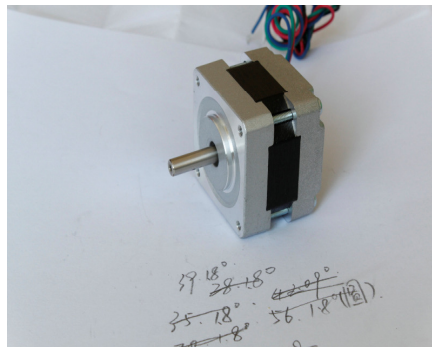


## Model: NEMA16 Stepper motor-SM39HS(1.8 degree)



### General Specification:

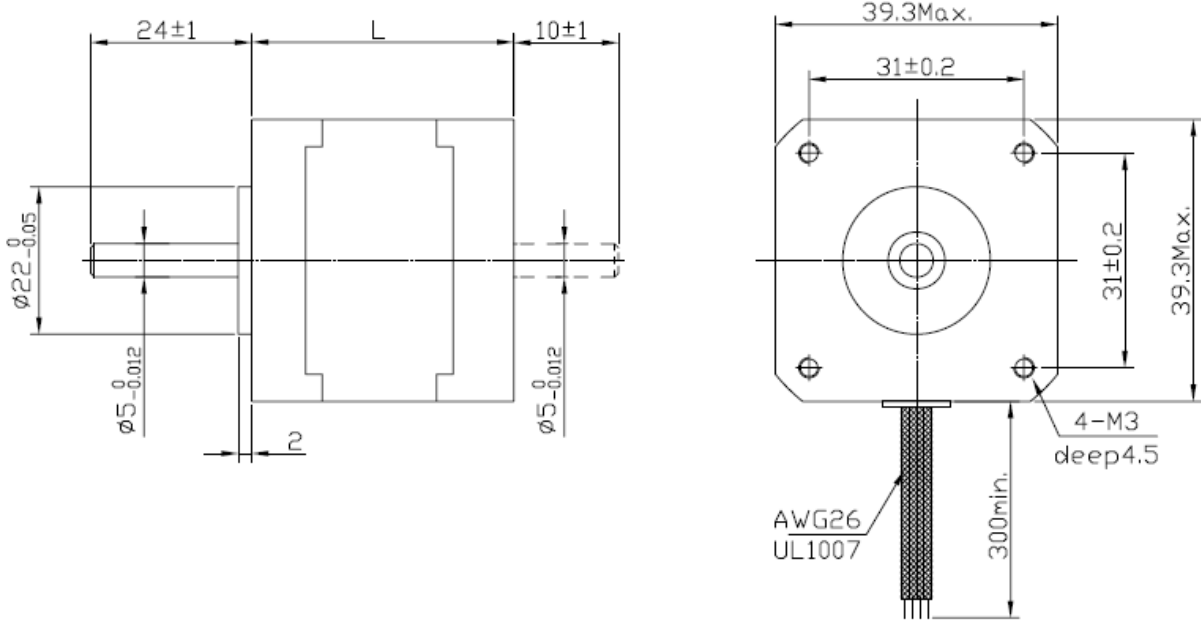
Step Accuracy	----- ±5%
Resistance Accuracy	----- ±10%
Inductance Accuracy	----- ±20%
Temperature Rise	----- 80°C MAX.
Ambient Temperature Range	----- -20°C~ +50°C
Storage Temperature Range	----- -30°C~ +60°C
Insulation Resistance	----- 100M Ω MIN. 500V DC
Dielectric Strength	----- 500V AC 1min
Radial Play	----- 0.02mm MAX. (450g Load)
End Play	----- 0.08mm MAX. (450g Load)
Max. radial force	----- 28N
Max. axial force	----- 10N

### Electrical Specification:

Model No.	Step Angle	Motor Length	Current /Phase	Resistance /Phase	Inductance /Phase	Holding Torque	Lead wires	Detent Torque	Rotor Inertia	Motor Weight
	( ° )	(L)mm	A	Ω	mH	g.cm	No.	g.cm	g.cm <sup>2</sup>	Kg
SM39HS20-0404	1.8	20	0.4	6.6	7.5	650	4	50	11	0.12
SM39HS20-0506	1.8	20	0.5	13	7.5	800	6	50	11	0.12
SM39HS34-0404	1.8	34	0.4	30	32	2100	4	120	20	0.18
SM39HS34-0306	1.8	34	0.3	40	20	1300	6	120	20	0.18
SM39HS38-0504	1.8	38	0.5	24	45	2900	4	180	24	0.2
SM39HS38-0806	1.8	38	0.8	7.5	6	2000	6	180	24	0.2
SM39HS44-0304	1.8	44	0.3	40	100	2800	4	250	40	0.25

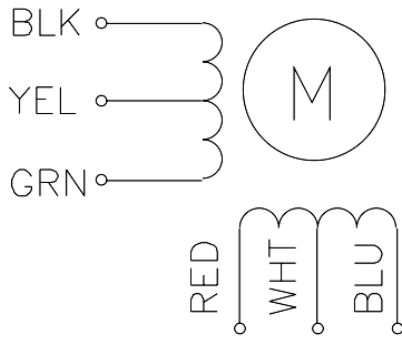
\***Note:** We can also manufacture products according to customer's requirements.

**Dimensions:**  
**(Unit=mm)**



**Wiring Diagram:**

6 LEADS



4 LEADS

