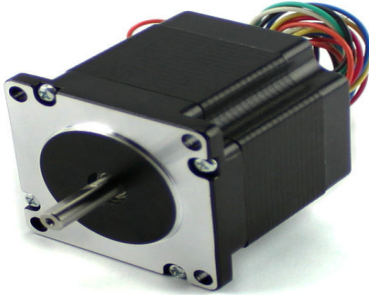


Model: NEMA23 Stepper motor-SM57HM (0.9 degree)



General Specification:

Step Accuracy ----- $\pm 5\%$
 Resistance Accuracy ----- $\pm 10\%$
 Inductance Accuracy ----- $\pm 20\%$
 Temperature Rise ----- 80°C MAX.
 Ambient Temperature Range ----- -20°C~ +50°C
 Storage Temperature Range ----- -30°C~ +60°C
 Insulation Resistance ----- 100M Ω MIN. 500V DC
 Dielectric Strength ----- 500V AC 1min
 Radial Play ----- 0.02mm MAX. (450g Load)
 End Play ----- 0.08mm MAX. (450g Load)
 Max. radial force ----- 75N
 Max. axial force ----- 15N

Electrical Specification:

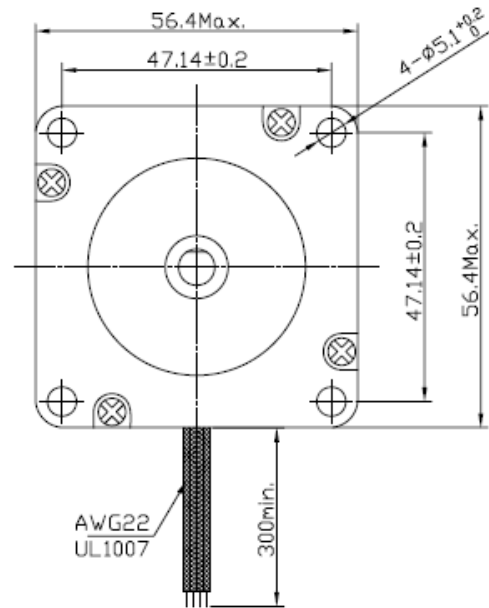
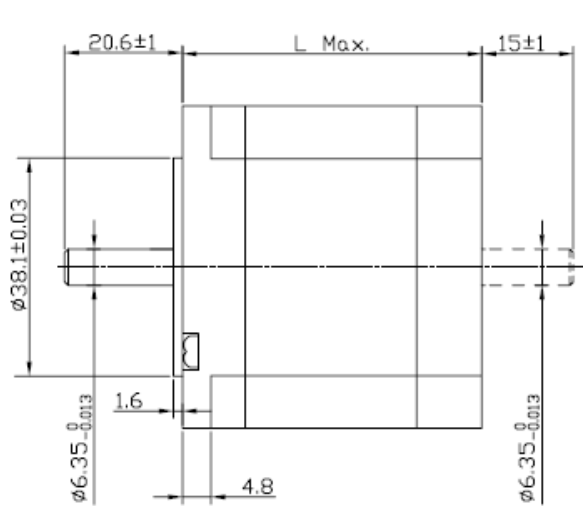
Model No.	Step Angle	Motor Length	Current /Phase	Resistance /Phase	Inductance /Phase	Holding Torque	Lead wires	Detent Torque	Rotor Inertia	Motor Weight
	($^{\circ}$)	(L)mm	A	Ω	mH	kg.cm	No.	g.cm	g.cm ²	Kg
SM57HM41-1006	0.9	41	1	5.7	8	3.9	6	210	120	0.45
SM57HM41-2006	0.9	41	2	1.4	2.2	3.9	6	210	120	0.45
SM57HM41-3006	0.9	41	3	0.63	1.0	3.9	6	210	120	0.45
SM57HM41-2804	0.9	41	2.8	0.7	2.2	5.5	4	210	120	0.45
SM57HM56-1006	0.9	56	1	7.4	17.5	9	6	400	300	0.80
SM57HM56-2006	0.9	56	2	1.8	4.5	9	6	400	300	0.80
SM57HM56-3006	0.9	56	3	0.75	1.9	9	6	400	300	0.80
SM57HM56-2804	0.9	56	2.8	0.9	4.5	12	4	400	300	0.80
SM57HM76-1006	0.9	76	1	8.6	23	13.5	6	680	480	1.00

SM57HM76-2006	0.9	76	2	2.25	5.6	13.5	6	680	480	1.00
SM57HM76-3006	0.9	76	3	1	2.6	13.5	6	680	480	1.00
SM57HM76-2804	0.9	76	2.8	1.13	5.6	18	4	680	480	1.00

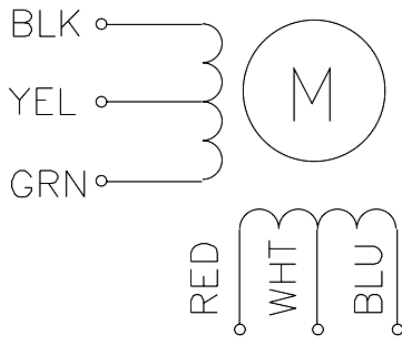


Spark Motors Pvt Ltd

Dimensions: (Unit=mm)



6 LEADS



4 LEADS

