



2 PHASE NEMA23 Closed Loop stepper Motor

General Specification:

Step Accuracy	±5%
Resistance Accuracy	±10%
Inductance Accuracy	±20%
Temperature Rise	80°C MAX.
Ambient Temperature Range	-20°C~ +50°C
Storage Temperature Range	-30°C~ +60°C
Insulation Resistance	100M Ω MIN. 500V DC
Dielectric Strength	500V AC 1min
Radial Play	0.02mm MAX. (450g Load)
End Play	0.08mm MAX. (450g Load)
Max. Radial force	75N
Max. Axial force	15N

Electrical Specification:

Model No.	Step Angle	Motor Length	Current /Phase	Resistance /Phase	Inductance /Phase	Holding Torque	Lead wires	Rotor Inertia	Motor Weight
	(°)	(L)mm	A	Ω	mH	Kg.cm	No.	g.cm ²	Kg
SM57STH51-2804BFED-2M	1.8	71	2.8	0.83	2.2	10	4	230	0.80
SM57STH76-2804BFED-0.35M	1.8	76	2.80	1.00	2.5	20	4	280	0.90
SM57STH76-4204BEFD-0.35M	1.8	96	4.20	0.60	1.8	20	4	440	1.20
SM57STH82-4204BFED-0.35M	1.8	102	4.20	1.1	2.5	22	4	600	1.30
SM57STH112-4204BFED-0.35M	1.8	132	4.20	0.90	3.8	30	4	800	1.60

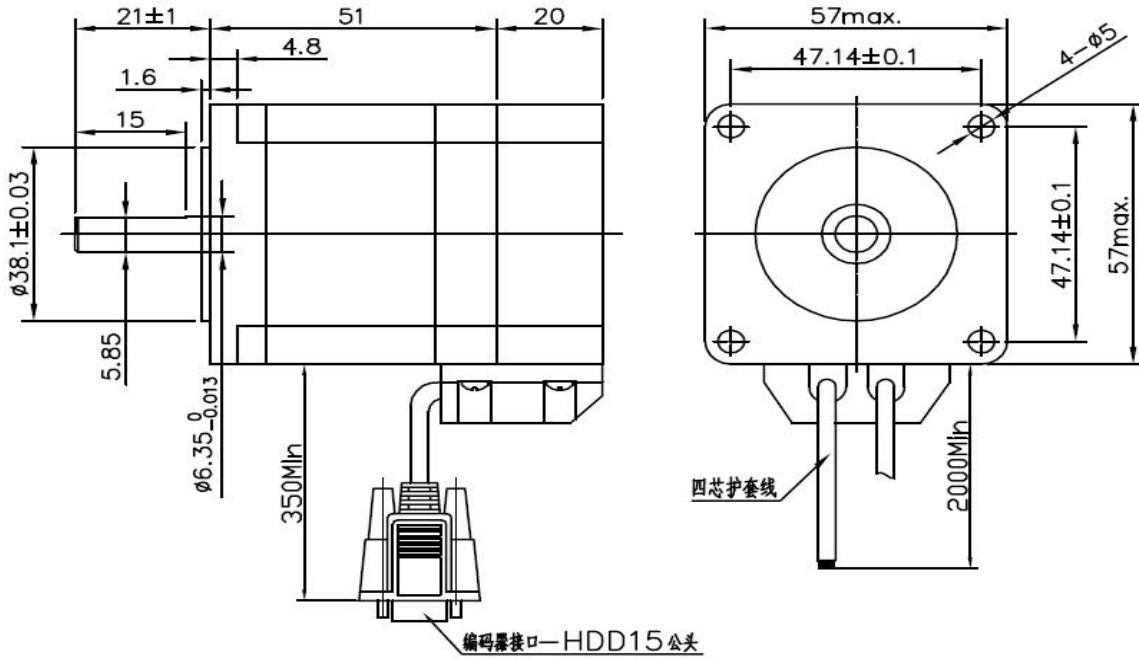
***Note:** We can also manufacture products according to customer's requirements.



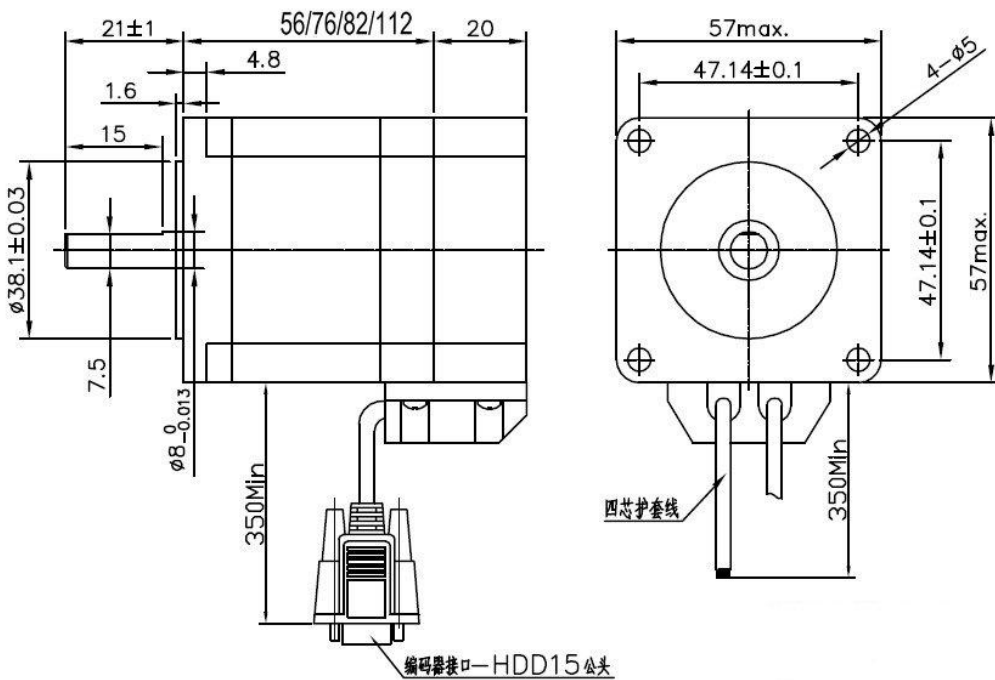
SPARK MOTORS CO.
Excellence in Motion

SPARK MOTORS PVT.LTD.

Dimensions: (Unit=mm)

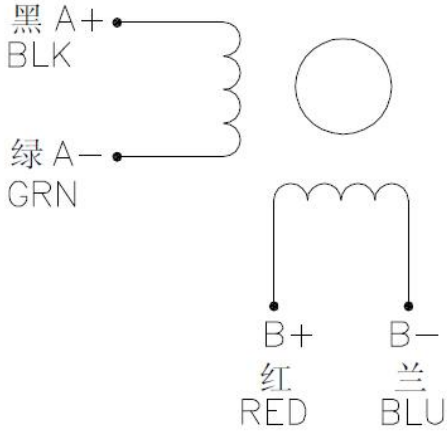


- SM57STH51-2804BFED-2M
- SM57STH76-2804BFED-0.35M
- SM57STH76-4204BEFD-0.35M
- SM57STH82-4204BFED-0.35M
- SM57STH112-4204BFED-0.35M



Wiring Diagram:

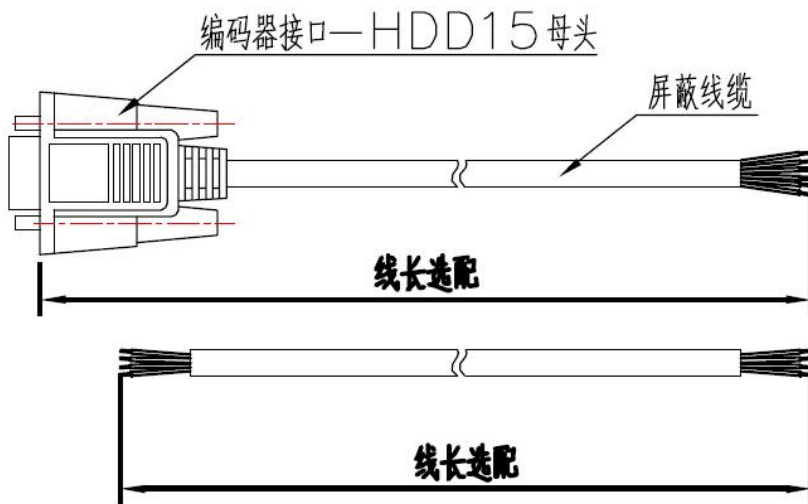
Wiring Diagram:



Encoder Wiring Diagram:

EA+	Encoder A phase input+	BLACK 黑
EA-	Encoder A phase input-	BLUE 蓝
EB+	Encoder B phase input+	YELLOW 黄
EB-	Encoder B phase input-	GREEN 绿
Vcc	Encoder Voltage(+5V)	RED 红
EGND	Encoder Grand(0V)	WHITE 白

LEADING WIRES FOR MOTOR AND ENCODER. HAVE 2 METER, 3METER AND 5 METER



Matched Drivers:

2 Phase Closed Loop stepper motor system match driver Model: SM-HSS57