



2 PHASE NEMA34 CLOSED LOOP STEPPER MOTOR SYSTEM

General Specification:

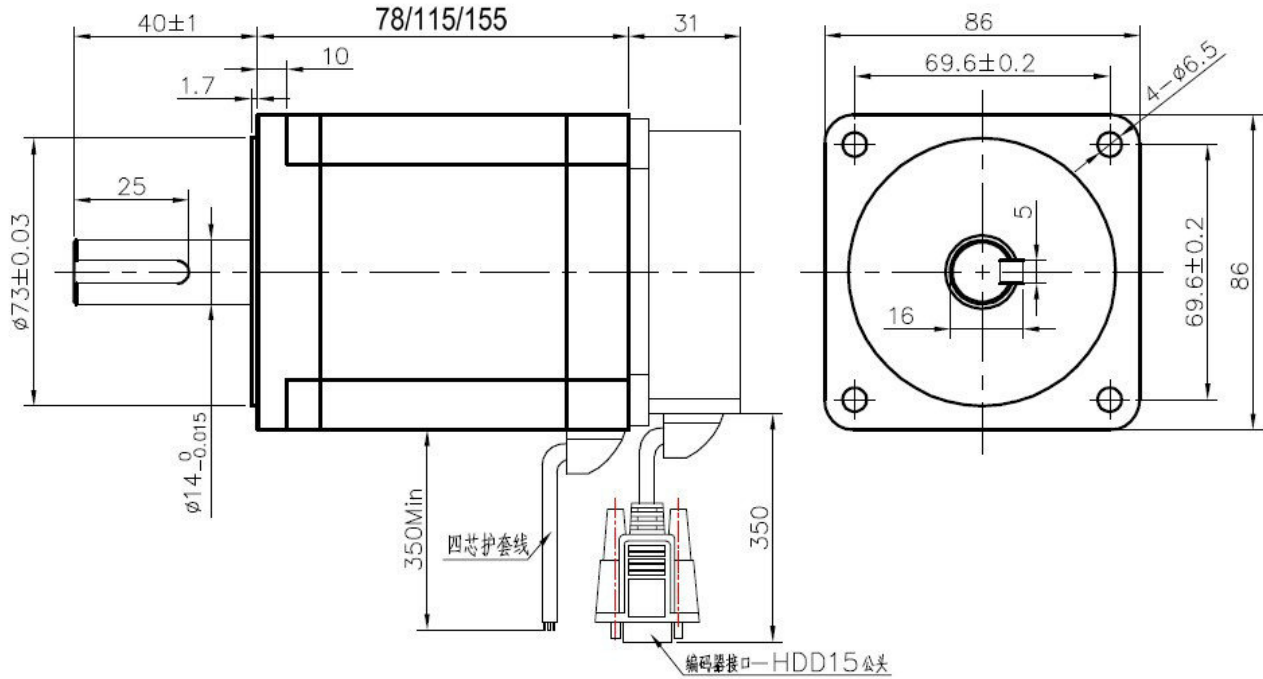
Step Accuracy ----- ±5%
 Resistance Accuracy ----- ±10%
 Inductance Accuracy ----- ±20%
 Temperature Rise ----- 80°C MAX.
 Ambient Temperature Range ----- -20°C~ +50°C
 Storage Temperature Range ----- -30°C~ +60°C
 Insulation Resistance ----- 100M Ω MIN. 500V DC
 Dielectric Strength ----- 500V AC 1min
 Radial Play ----- 0.02mm MAX. (450g Load)
 End Play ----- 0.08mm MAX. (450g Load)
 Max. Radial force ----- 220N
 Max. Axial force ----- 60N

Electrical Specification:

Model No.	Step Angle	Motor Length	Current /Phase	Resistance /Phase	Inductance /Phase	Holding Torque	Lead wires	Rotor Inertia	Motor Weight
	(°)	(L)mm	A	Ω	mH	N.m	No.	g.cm ²	Kg
SM86STH78-6004XBJED-0.35M	1.8	109	6.0	0.27	2	4.6	4	1000	2.50
SM86STH115-6004YBJED-0.35M	1.8	146	6.0	0.36	3.8	8.5	4	2700	4.00
SM86STH155-6004YBJED-0.35M	1.8	186	6.0	0.44	3.8	12	4	4000	5.60

***Note:** We can also manufacture products according to customer's requirements.

Dimensions:
(Unit=mm)

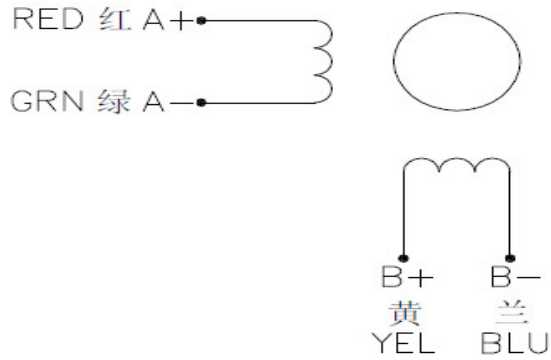


Wiring Diagram:

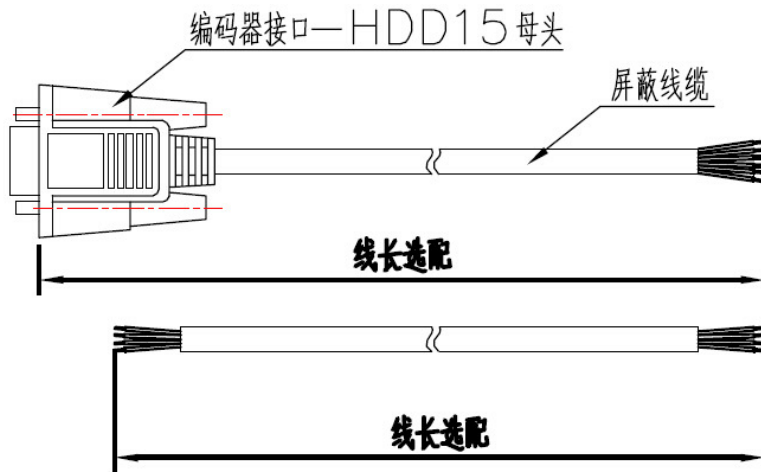
Encoder Wiring Diagram:

EA+	Encoder A phase input+	BLACK 黑
EA-	Encoder A phase input-	BLUE 蓝
EB+	Encoder B phase input+	YELLOW 黄
EB-	Encoder B phase input-	GREEN 绿
Vcc	Encoder Voltage(+5V)	RED 红
EGND	Encoder Grand(0V)	WHITE 白

Wiring Diagram:



LEADING WIRES FOR MOTOR AND ENCODER HAVE 2 METER, 3METER AND 5 METER



Matched Drivers:

2 Phase Closed Loop stepper motor system match driver Model: SM-HSS86